

# Briar Dene

Residential Care Home

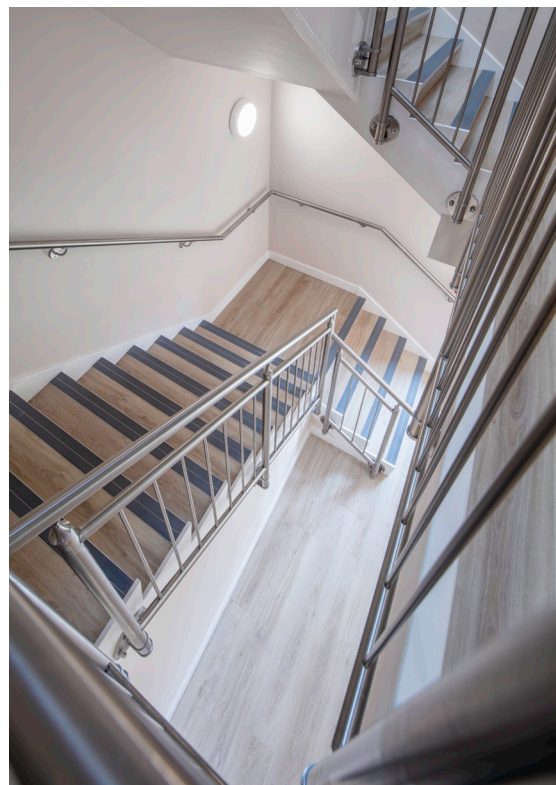


COMMERCIAL



BEYOND  
FLOORING

<b>Sector</b>	Healthcare
<b>Product Range</b>	Luxury Vinyl Tiles - Heterogeneous Vinyl
<b>Collection + Design</b>	Moduleo 55 Impressive: Santa Cruz 59253 Moduleo 55 Woods: Black Jack Oak 22215 Optimise 70: Elias T32
<b>Surface</b>	1.400 m <sup>2</sup>
<b>Client</b>	Briar Dene Residential Care Home
<b>Location</b>	Scarborough - United Kingdom
<b>Date</b>	2020
<b>Installer</b>	Trevor Wharton
<b>Architect</b>	Mark Kelly (Owner)



**“The rejuvenating effect of our seaside location is a natural attraction for our residents, but it is crucially important that our interior plays its part by in the wellbeing of our residents through an environment in which they feel calm and rested.”**

**LVT and Heterogeneous Vinyl floors from IVC Commercial have been used to set a tone for resident wellbeing at Scarborough's Briar Dene Residential Care Home.**

Situated in the picturesque north side of the town, Briar Dene is a new purpose-built residential care facility that's focused on providing its residents the very best quality of life. With an on-site hair and beauty salons and a panoramic sun lounge, the centre certainly boasts an environment focused on wellbeing.

For floors, Briar Dene's owner, Mark Kelly, turned to the expertise of Trevor Wharton Contracts, which put forward a range of options from IVC Commercial's LVT and Heterogeneous Vinyl solutions. Trevor Wharton Contracts suggested the authentic and original 55 Impressive LVT for corridors, receptions, lounges and dining rooms while bedrooms benefit from the acoustic performance of Optimise 70 vinyl floors.

“IVC Commercial's off-the-shelf options provide excellent scope for projects such as these,” explains Trevor Wharton. “We suggested the authentic looks of the

range topping Moduleo 55 Impressive for public areas, complementing this with the noise reduction of Optimise 70 to make bedrooms comfortable. It's really important to recommend appropriate solutions and with IVC Commercial we can do this on an area by area basis.”

**The design saw two Moduleo 55 Impressive decors used in Santa Cruz 59253 (700m2) and Blackjack Oak 22215 (100m2). With emboss in register technology, these floors deliver the authentic look and feel for a closer connection to nature, while the performance floor's 0.55mm wear layer and Protectonite® finish provide a lasting floor in shared areas.**

For bedrooms, Briar Dene has embraced the nature of Heterogeneous Vinyl with Elias Groutless T32 (600m2), an 'all-over' wood design, which combined with the floor's 19dB acoustic insulation and underfoot comfort, helps to set an environment to encourage the wellbeing of residents. With Sanitec, the floors are also permanently anti-bacterial, protecting against MRSA, e-coli and common bacteria.

Briar Dene's owner, Mark Kelly, shares his reasons for using IVC Commercial: “The rejuvenating effect of our seaside location is a natural attraction for our residents, but it is crucially important that our interior plays its part by in the wellbeing of our residents through an environment in which they feel calm and rested. Our Scandinavian influenced design shows this intention, but the use of natural wood floor finishes is simply not practical on a day-to-day operational and hygiene basis.

**“Trevor's recommendation for IVC Commercial's great looking Moduleo 55 Impressive allowed us to create the desired effect while presenting a solution that offers longevity and simplicity. In bedrooms, Optimise 70's comfort, acoustic performance and anti-bacterial are ideal, with the unusual Elias finish adding a stylish touch.”**

Both IVC Commercial floors selected in this project are responsibly made in Europe using renewable energy. Moduleo 55 Impressive features 50% recycled content, with both floors benefitting from a fully traceable 100% European Reach compliant supply chain.